



evergreenLANDCARE®

get the quality advantage

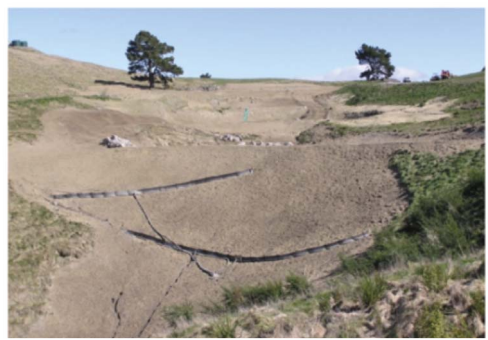
HYDROSEEDING involves the application of a slurry blended for each site containing either recycled paper or wood mulch, grass seed, fertiliser and extra wood fibre. This slurry then dries to a protective blanket. As well as preventing the soil surface from drying out this blanket also protects it from the effects of wind and moderate rainfall. The layer of pulp holds the grass seed in place until it germinates. An even coverage of grass over the whole area can therefore be achieved because seed is not transported by wind or over ground water flows.

Hydroseeding has the following benefits:

- Steep slopes can be treated
- Immediate soil surface protection
- Vigorous growth even on low fertility substrates
- Fibrous root systems bind the soil surface and resist erosion
- Dust suppression effect
- Enhanced moisture retention
- Minimal or no seed bed preparation required
- Soil surface temperature fluctuations moderated



STRAWMULCHING involves spreading loose straw or hay over erodible soils. The open textured matrix of the straw is very effective in filtering sediment from surface water. When used in conjunction with seed the straw mulch blanket also creates a microclimate at the ground surface. Its open weave allows light and water to penetrate down onto the seed bed but minimises the negative effects of frost or drying winds. This provides ideal conditions for germination.



For further information contact:

Evergreen Landcare
P.O.Box 2294
Taupo 3351

North Island 07 345 9985
South Island 03 349 4907
www.evergreenlandcare.co.nz

evergreen®
—LANDCARE—
get the quality advantage

